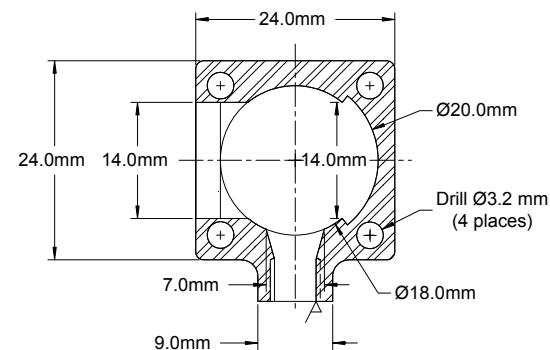
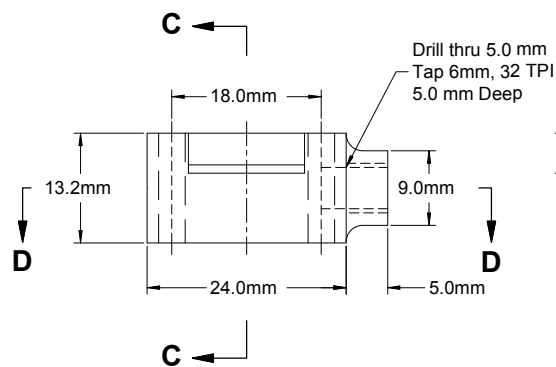
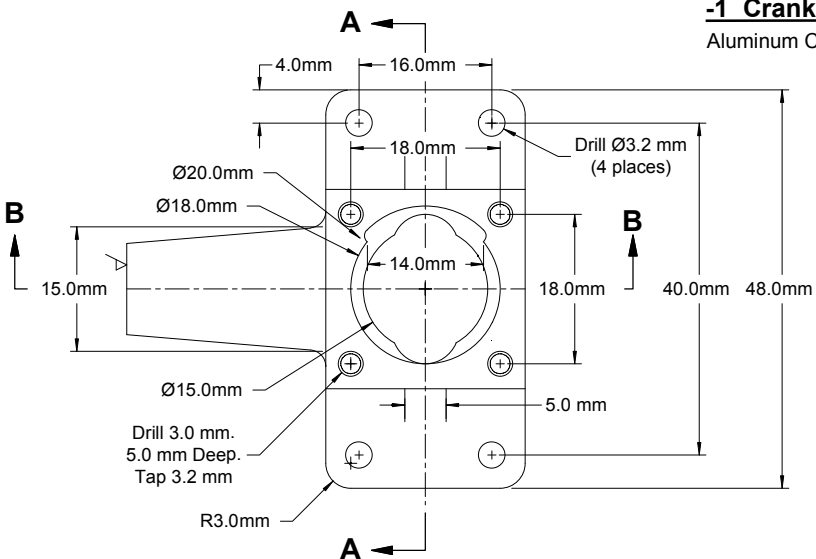


**-3 Stud (4 required)**  
Mild Steel

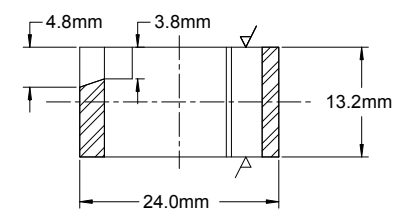


12-22-1998

**-1 Crankcase**  
Aluminum Casting



**Section D-D**



**Section C-C**

**-2 Bypass**  
Aluminum Casting

Machine

10 Feb 2000	Amended per Modele Reduit D'Avion 5/1944	BMBI	MAT'L	As Noted	<b>DO NOT SCALE DRAWING</b> WORK TO DIMENSIONS ALL DIMENSIONS ARE IN INCHES
2006-10-04	Fixed lower piston travel problem	BMBI	SCALE	<b>Full Size</b>	
			DRAWN	E. Mancini 1943	
DATE	CHANGE	BY	CAD	<b>BMBI</b> 12-22-1998	NEXT ASSEMBLY



NAME  
**Ein Dieselmotot zum Selbstbauen**

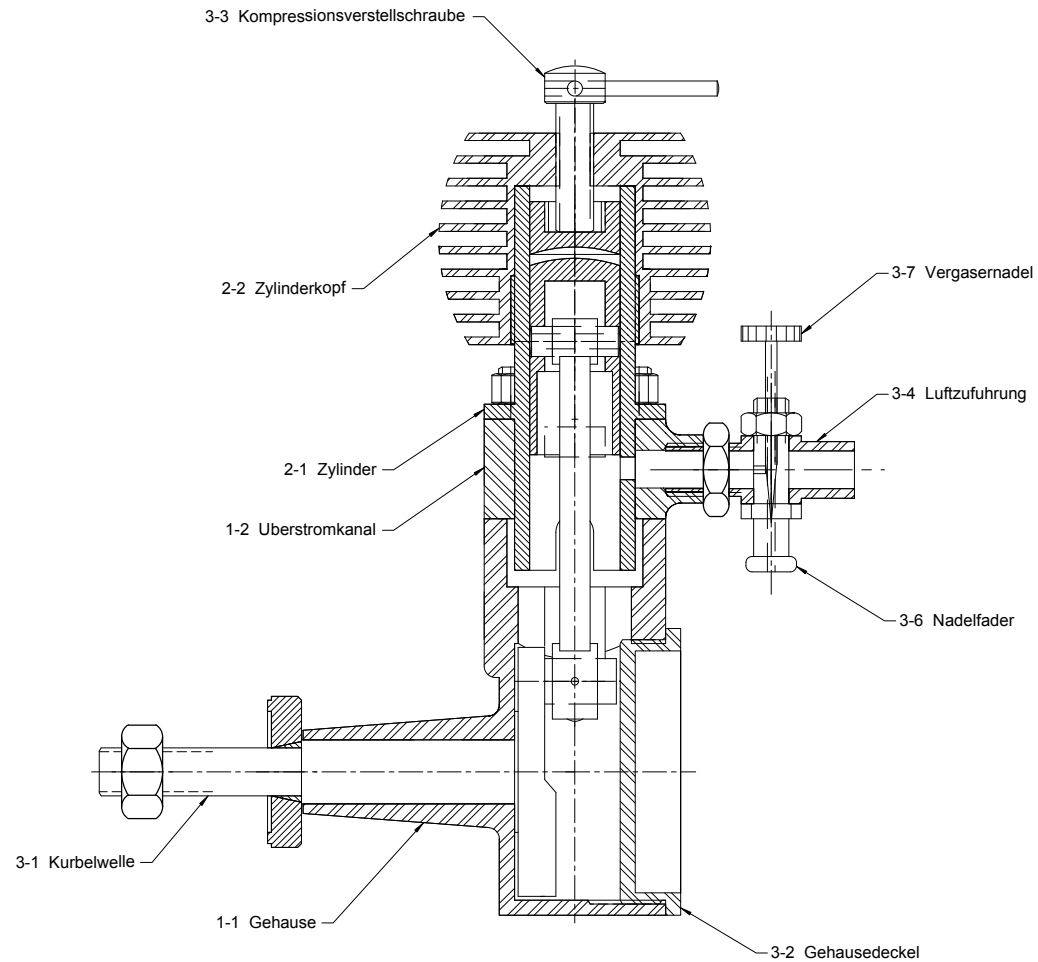
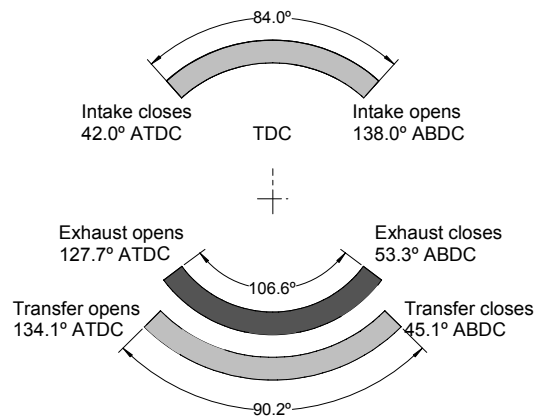
NUMBER  
**Sheet 1 - Crankcase**


# Ein Dieselmotor zum Selbstbauen

Konstrukter: E. Mancini, 1944

(A Diesel Motor from Selstbaum built by E.Mancini, 1944)

Hubrum (Displacement): 3.68 ccm (0.22 cu in)  
 Bohrung (Bore): 14 mm (0.551 in)  
 Hub (Stroke): 24 mm (0.945 in)



9 Feb 2000	Amended per Modele Reduit D'Avion 5/1944	BMBI	MAT'L	As Noted	<b>DO NOT SCALE DRAWING</b> WORK TO DIMENSIONS ALL DIMENSIONS ARE IN INCHES NEXT ASSEMBLY		NAME
2006-10-05	Revise crankcase for lower piston movement	BMBI	SCALE	<b>Full Size</b>			Ein Dieselmotot zum Selbstbauen
			DRAWN	E. Mancini 1943			NUMBER
DATE	CHANGE	BY	CAD	<b>BMBI</b> 12-23-1998			<b>Sheet 4 - General Arrangement</b>