

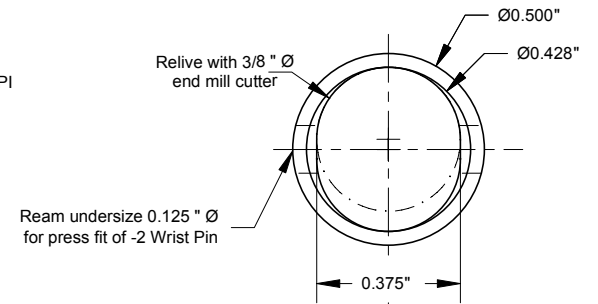
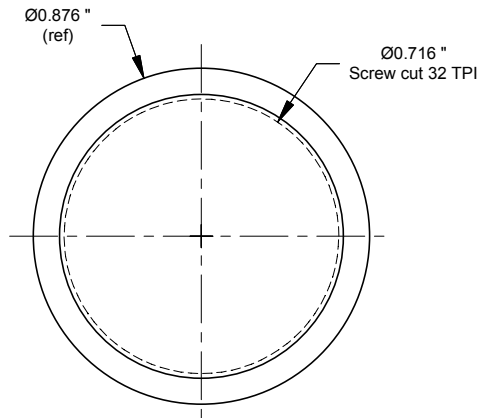
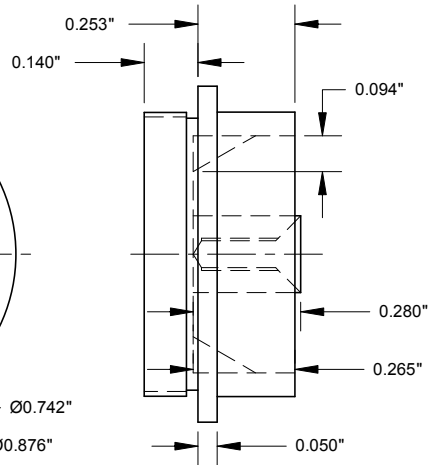
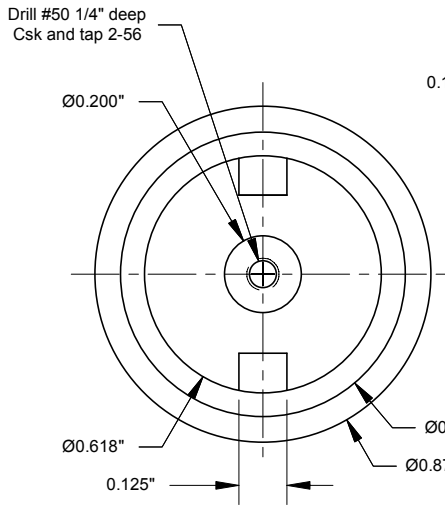
-1 CRANKCASE

Magnesium Die Casting
with cast-in bronze bush

2005-02-01	Missing dimensioning added	BMBI	MAT'L	As Noted	DO NOT SCALE DRAWING WORK TO DIMENSIONS ALL DIMENSIONS ARE IN INCHES
			SCALE	2 X SIZE	
			DRAWN	RMB 12-21-97	NEXT ASSEMBLY
DATE	CHANGE	BY	CAD	PMB 1-1-98	

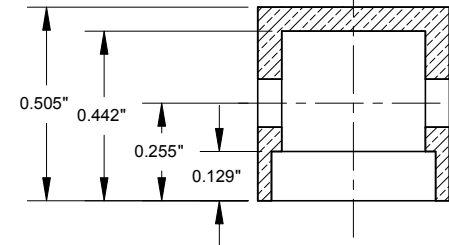


NAME	
Mite Mfg Co .098 Diesel 1949	
NUMBER	
Sheet 2 - Crankcase	



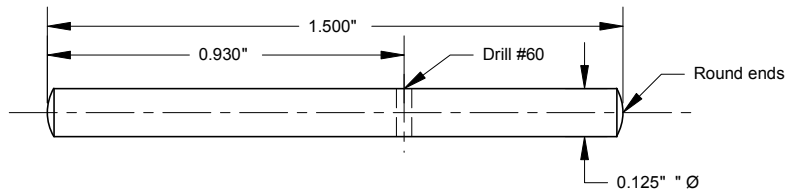
-6 BACKPLATE

Magnesium Casting



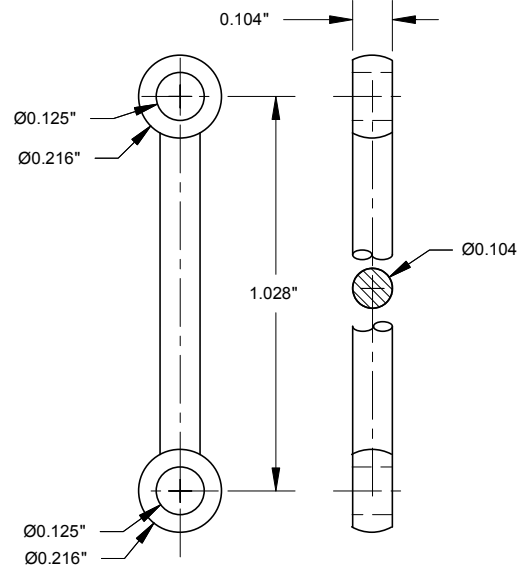
-1 PISTON

Cast Iron



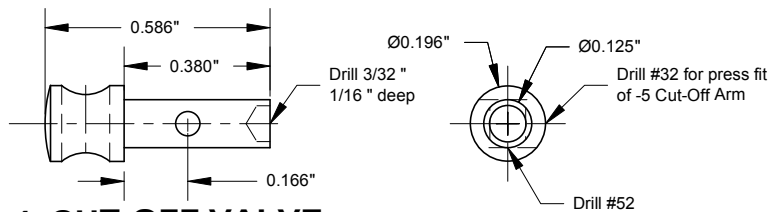
-5 CUT-OFF ARM

1/8" Aluminum Rod



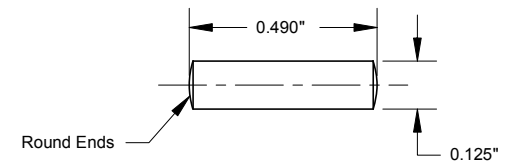
-3 CONNECTING ROD

Steel




-4 CUT-OFF VALVE

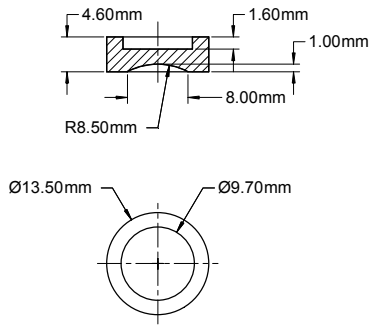
Aluminum



-2 WRIST PIN

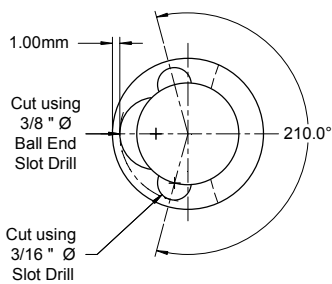
Drill Rod

2001.5.2	Missing dimenstions added	BMBI	MAT'L	As Noted	DO NOT SCALE DRAWING WORK TO DIMENSIONS ALL DIMENSIONS ARE IN INCHES	 MOTOR BOYS (INTERNATIONAL)	NAME
			SCALE	2 X SIZE			Mite Mfg Co .098 Diesel 1949
			DRAWN	RMB 12-21-97	NEXT ASSEMBLY		NUMBER
DATE	CHANGE	BY	CAD	PMB 1-1-98			Sheet 3 - Piston



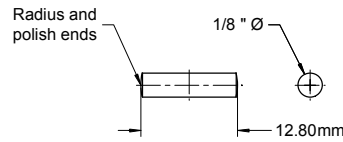
-3 CONTRA-PISTON

Cast Iron



-1 CYLINDER LINER

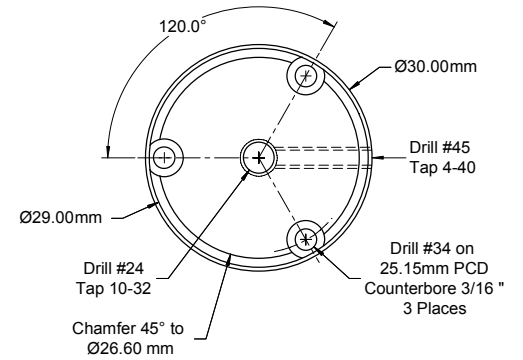
Steel



-4 WRIST PIN

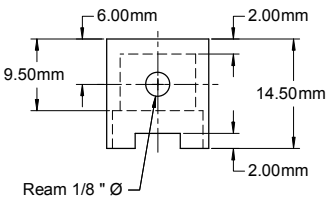
1/8 " Drill Rod H&T

SECTION A-A (typ)



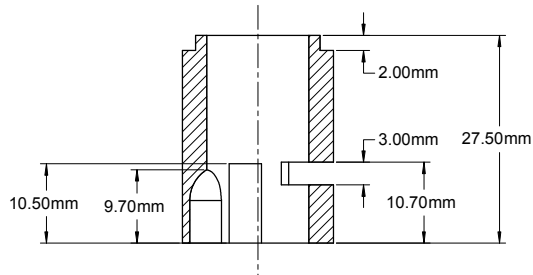
-7 CYLINDER HEAD

Aluminum



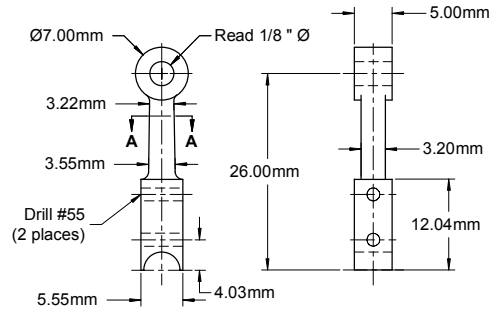
-2 PISTON

Cast Iron



-5 CONROD

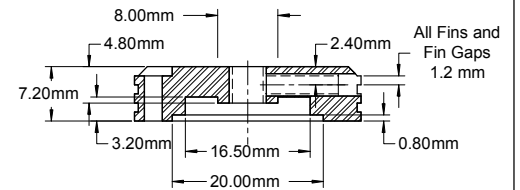
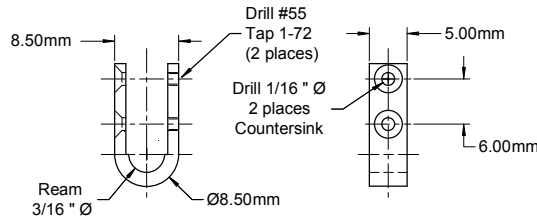
Aluminum Bronze



-6 CONROD CAP

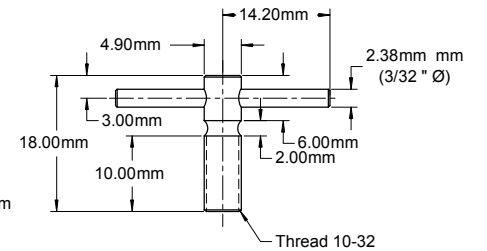
Aluminum Bronze


Sweat solder -6 Cap to -5 Conrod then drill all holes, tap and ream rod ends. Finally, separate and open out holes in -6 Cap for 1-72 screws.

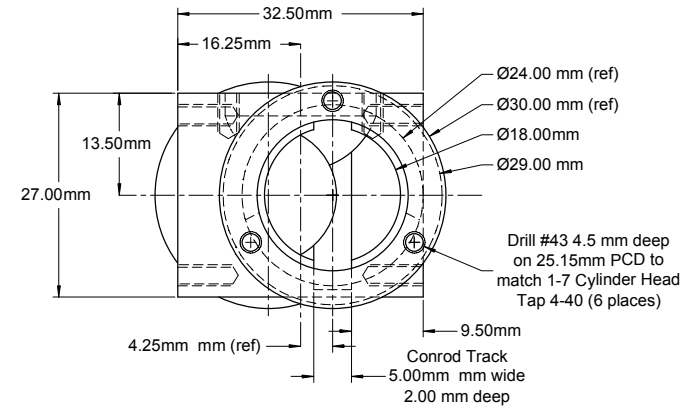
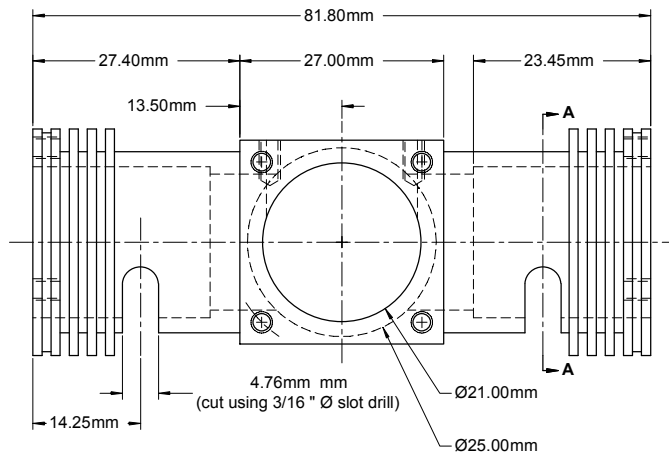


-8 COMPRESSION SCREW ASSY.

Steel (Blue Finished)

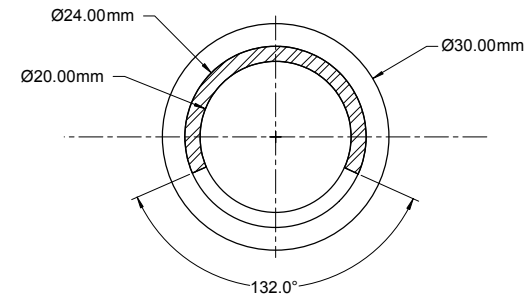
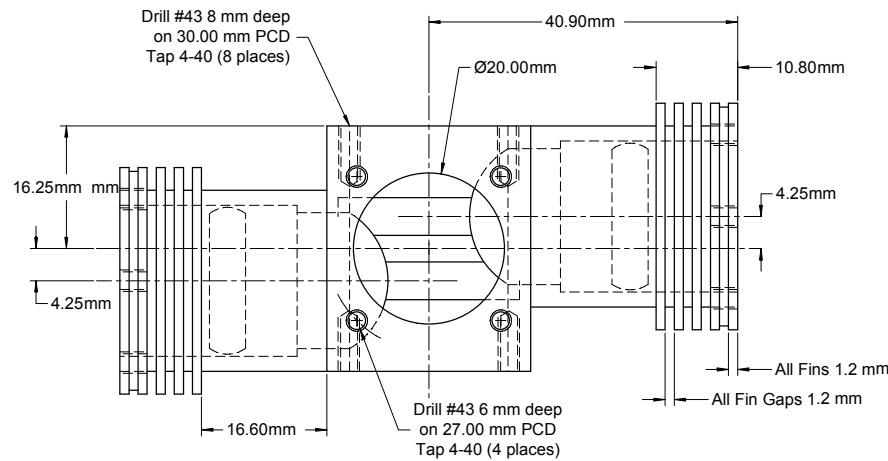


28 Oct 1999	Change big end screws to countersunk head	BMBI	MAT'L	As Noted	DO NOT SCALE DRAWING WORK TO DIMENSIONS ALL DIMENSIONS ARE IN INCHES NEXT ASSEMBLY	 MOTOR BOYS (INTERNATIONAL)	NAME
2006-02-04	Show thread on Conrod U Straps.	BMBI	SCALE	Full Size			Fig Tree Pocket Twin
DATE	CHANGE	BY	CAD	RWW BMBI			NUMBER




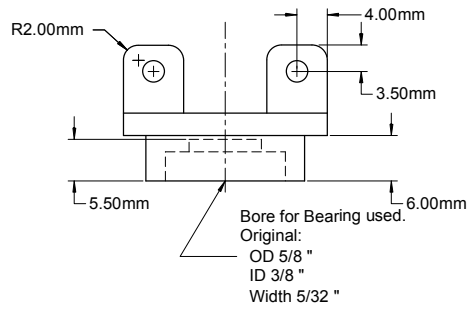
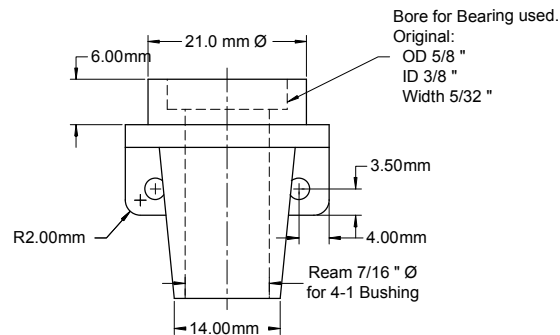
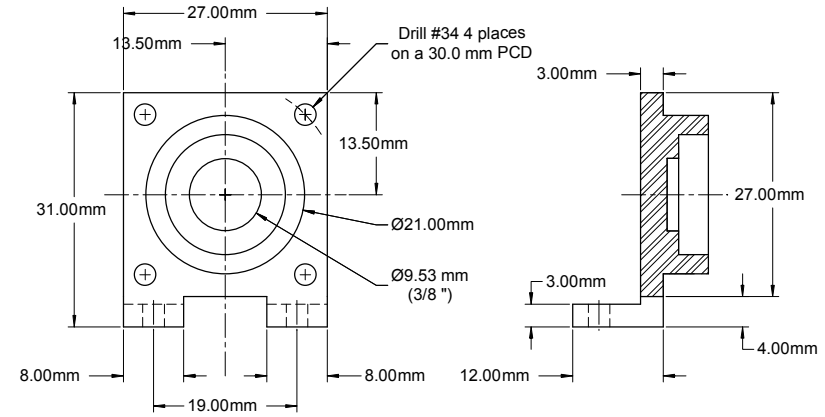
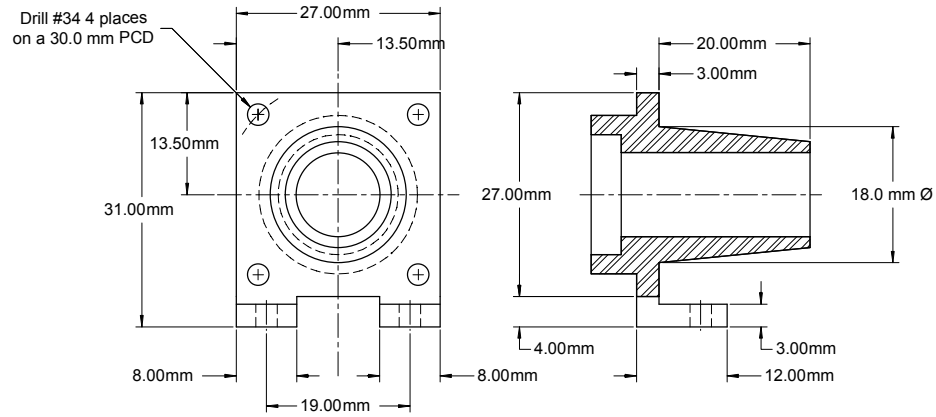
-1 CRANKCASE

Aluminum (7075 T4)



SECTION A-A

			MAT'L	As Noted	DO NOT SCALE DRAWING WORK TO DIMENSIONS ALL DIMENSIONS ARE IN INCHES	 MOTOR BOYS (INTERNATIONAL)	NAME
			SCALE	Full Size			Fig Tree Pocket Twin
			DRAWN	RWW			NUMBER
DATE	CHANGE	BY	CAD	BMBI			Sheet 2 - CRANKCASE




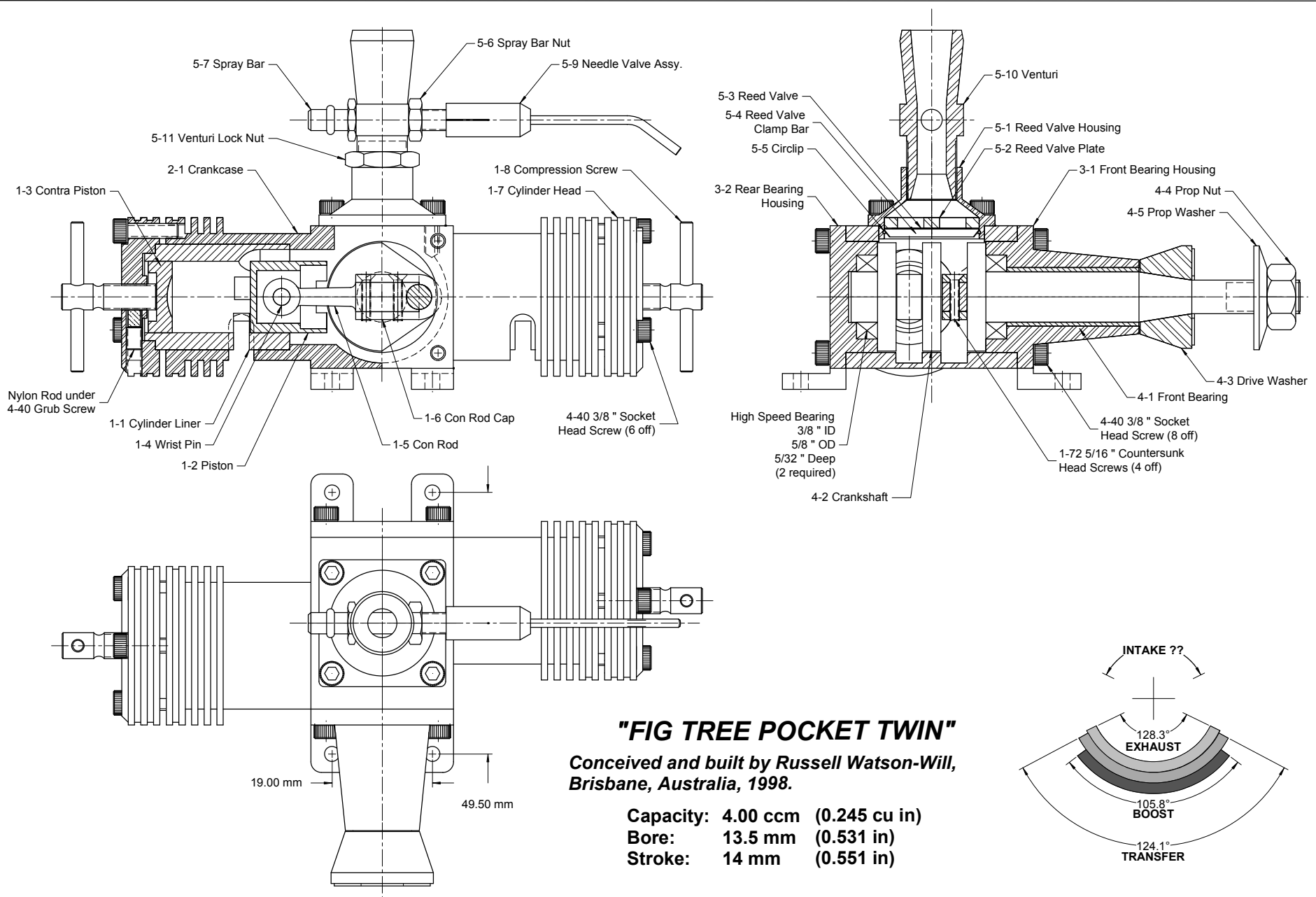
-1 FRONT BEARING HOUSING

Aluminum (7075 T4)

-2 REAR BEARING HOUSING

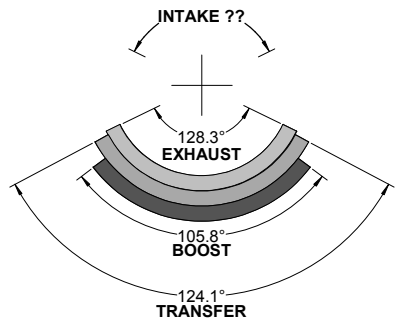
Aluminum (7075 T4)

			MAT'L	As Noted	DO NOT SCALE DRAWING WORK TO DIMENSIONS ALL DIMENSIONS ARE IN INCHES NEXT ASSEMBLY	 MOTOR BOYS (INTERNATIONAL)	NAME
			SCALE	Full Size			Fig Tree Pocket Twin
			DRAWN	RWW			NUMBER
DATE	CHANGE	BY	CAD	BMBI			Sheet 3 - CRANKCASE ENDS

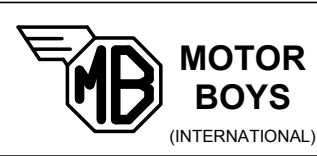


"FIG TREE POCKET TWIN"
*Conceived and built by Russell Watson-Will,
 Brisbane, Australia, 1998.*

Capacity: 4.00 ccm (0.245 cu in)
Bore: 13.5 mm (0.531 in)
Stroke: 14 mm (0.551 in)



28 Oct 1999	Change big end screws to countersunk head	BMBI	MAT'L	As Noted	DO NOT SCALE DRAWING <small>WORK TO DIMENSIONS ALL DIMENSIONS ARE IN INCHES</small> NEXT ASSEMBLY
2006-02-04	Change big end screws to permit assembly	BMBI	SCALE	Full Size	
			DRAWN	RWW	
DATE	CHANGE	BY	CAD	BMBI	



NAME Fig Tree Pocket Twin
NUMBER Sheet 7 - GENERAL ARRANGEMENT